

Acer Chromebook CP713-3W

LIFECYCLE EXTENSION GUIDE

Self-Repair 1-1
Disassembly Procedures 1-3
Troubleshooting 1-29
FRU (Field Replaceable Unit) List 1-30
Exploded Diagrams 1-31
Software Update 1-34
Personal Data Removal 1-35

Self-Repair

This chapter highlights the limited self-repair capabilities of the product.

Prior performing self-repair, familiarize yourself with the Safety Guidelines and Recommended Equipment sections first as described in the chapter "[Disassembly Procedures](#)".

Depending on model, the following key components are eligible for self-repair (if applicable);

- Battery pack
- HDD / SSD module
- DIMM module(s)
- WLAN module
- LTE module

If a particular key component is listed and thus would be eligible for self-repair, but is not described in the "[Disassembly Procedures](#)" section, then this component is either not present on the respective model, or it is present but embedded on the motherboard and therefore not eligible for self-repair.

⇒ **NOTE:**

Do not attempt to replace other components than those listed above.

⇒ **NOTE:**

For replacement parts, always use only Acer certified components in order to safeguard quality, optimum system performance, stability and reliability of the product.

⇒ **NOTE:**

Any damage to the product that occur during self-repair, or which has occurred as a result of a careless or unsuccessful self-repair attempt, is not covered by the standard product warranty.

Disassembly Procedures

Please refer to the chapter "[Disassembly Procedures](#)" for step by step disassembly instructions.

System BIOS & Driver Updates

Visit <http://www.acer.com/support> to discover the available system BIOS and Drivers for this product. After selecting the desired country/language, either enter the model name or product serial number, or select the product from the list of suggested models in order to get access to product-specific software and documentation.

To update the system BIOS:

- Download the desired system BIOS version from the website
- Unzip the downloaded file to your computer
- Double-click the extracted file in order to initiate the update process
- The update process itself is fully automated and its progress is visualized by means of a progress indicator
- A visual notification is shown when the update is complete

⇒ **NOTE:**





Upgrading the system BIOS incorrectly, or intermittence of the system BIOS update process could harm the product.

⇒ **NOTE:**

System BIOS upgrades or downgrades, if not performed by an Acer Service Center or authorized Service Partner, are at own risk.

To update Drivers:

Run Windows Update in order to get the latest drivers from Acer:

- Select the Start  button
- Go to **Settings**  > **Update & Security**  > **Windows Update** 
- Available Drivers will automatically be listed on the screen. Press **Download** to start the download of the respective driver
- Installation of the driver will start automatically once the download is completed

Software Recovery

This product has embedded software recovery tools which can be used to either perform a partial or full software recovery, but also to create a Factory Default recovery media.

For more information about the software recovery options, how to perform a software recovery or creating a Factory Default recovery media, please refer to the chapter "Recovery" which is available in the User Manual of the product.

⇒ **NOTE:**

In the event of not being able to create a Factory Default recovery media, it is possible to obtain a copy of the recovery media through Acer Customer Service (<http://www.acer.com/support>)

This is not a free of charge service.

Disassembly Procedures

Safety Guidelines

This chapter contains step by step procedures on how to remove and de-install components from the computer. Use the following safety guidelines to ensure your personal safety. Each procedure included in this chapter assumes that you are preparing your computer for recycling and disposal. **By performing any of these procedures you acknowledge that any remaining warranty applicable to your computer will be voided. Before you start any of the procedures in this chapter, make sure to read the following safety guidelines and the respective instructions within the chapter.**

CAUTION!

- Turn off your computer and disconnect all power sources before opening the computer cover or panels.
- To avoid electrostatic discharge, ground yourself by using a wrist grounding strap or by periodically touching an unpainted metal surface at the same time as touching a connector on the back of the computer.
- Take off any metal objects on your arms or fingers such as bracelets, rings or watches and make sure your hands are completely dry. Even if your unit is unplugged, there may still be some remaining electric charge.
- If a component does not come out easily, do not forcefully remove it. Instead, check that you are removing it correctly and that no wires or other parts are in the way.
- When you disconnect a cable, pull on its connector or on its pull-tab, not on the cable itself. Some cables have connectors with locking tabs; if you are disconnecting this type of cable, press in on the locking tabs before you disconnect the cable.

Recommended Equipment

The following equipment are recommended to do the following maintenance procedures:

- Wrist grounding strap and conductive mat
- Flat screwdriver
- Philips screwdriver
- Polydrive screwdriver
- Plastic tweezers
- Flat plastic pry

WEEE Annex VII Component

These components are classified as requiring selective treatment:

- Battery pack
- Touchpad module
- SSD module
- USB board
- Mainboard
- LCD panel

Pre-disassembly Instructions

Do the following prior to starting any maintenance procedures:

1. Place the system on a stable work surface.
2. Remove the power adapter from the USB Type-C port (A or B) as shown in [Figure 1-1](#).
3. Remove all cables from system.

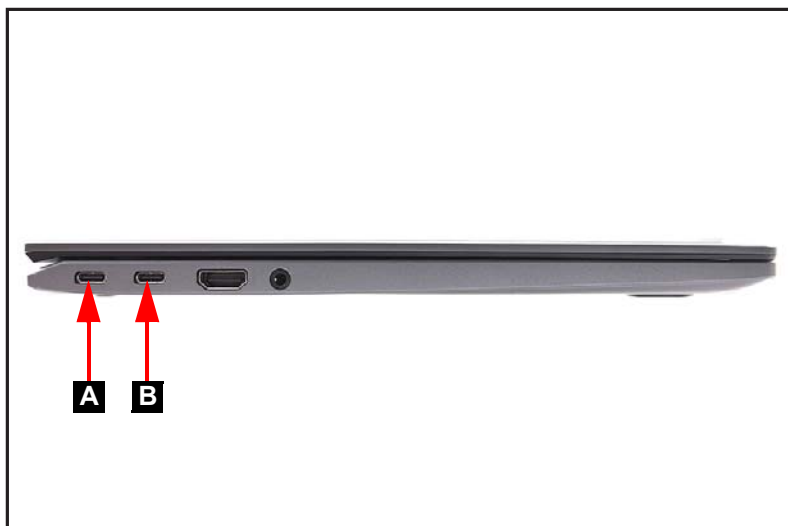


Figure 1-1. AC Adapter Outlet

4. Remove the microSD card from the microSD card slot (C) ([Figure 1-2](#)).

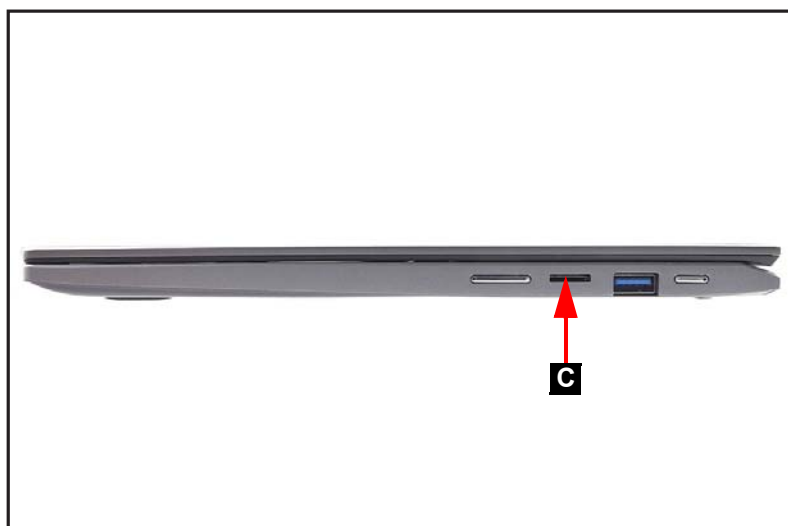


Figure 1-2. MicroSD Card Removal

⇒ NOTE:

Make sure the system is completely powered off.

Base Cover Removal

1. Remove nine (9) screws from the base cover (Figure 1-3).



Figure 1-3. Base Cover Removal

2. Carefully pry up the base cover starting from the upper right edge side to release the latches. Then continue releasing the remaining latches on the upper, left, right, and bottom sides (Figure 1-4).



Figure 1-4. Base Cover Removal

3. Grasp and remove the base cover from the system (Figure 1-5).



Figure 1-5. Base Cover Removal

Battery Pack Removal

Prerequisite:

Base Cover Removal

1. Find the battery pack (A) on the top assembly (Figure 1-6).
2. Detach the tape (B) securing the battery cable to the mainboard connector (Figure 1-6).
3. Detach the transparent mylar (C) securing the battery cable and keyboard FPC (Figure 1-6).

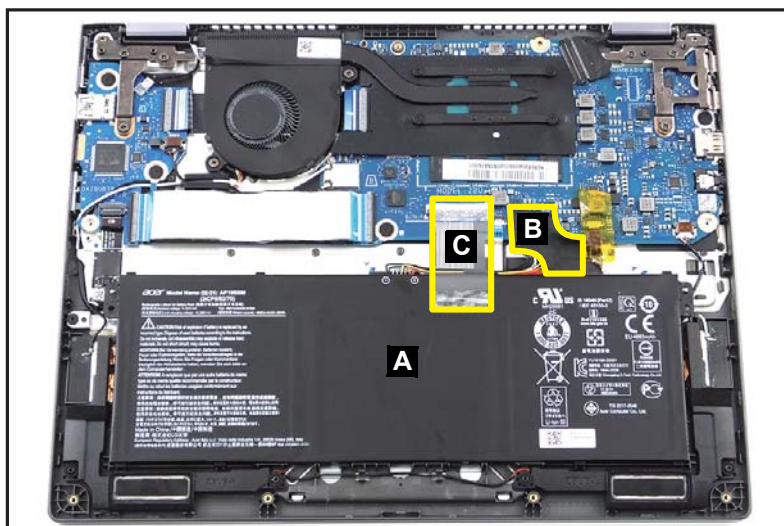


Figure 1-6. Battery Pack Removal

4. Disconnect the battery cable from the mainboard connector (D) (Figure 1-7).



Figure 1-7. Battery Pack Removal

5. Remove the battery pack from the top assembly (Figure 1-8).



Figure 1-8. Battery Pack Removal

+ **IMPORTANT:**

Follow local regulations for battery disposal.

Touchpad Module Removal

Prerequisite:

Battery Pack Removal

1. Disconnect the keyboard FPC from the mainboard connector (A) (Figure 1-9).

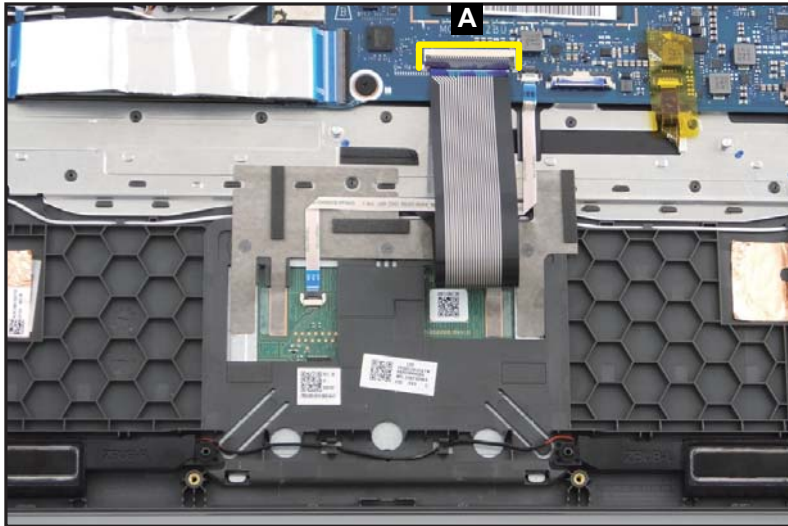


Figure 1-9. Touchpad Module Removal

2. Disconnect the touchpad FFC (B) from the touchpad module and mainboard connectors. Then remove the touchpad FFC from the top assembly (Figure 1-10).

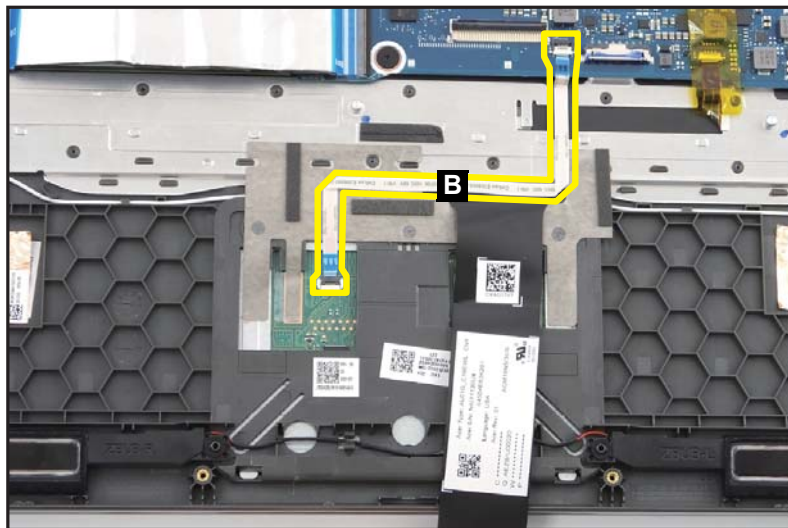


Figure 1-10. Touchpad Module Removal

3. Gently peel off the conductive tape (C) to detach it from its designated slot on the touchpad module and top assembly (Figure 1-11).

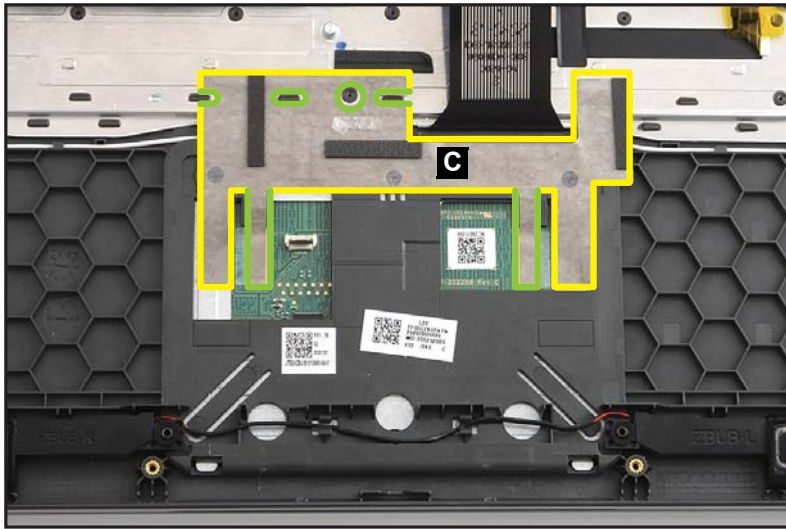


Figure 1-11. Touchpad Module Removal

4. Remove three (3) screws securing the touchpad module in place (Figure 1-12).

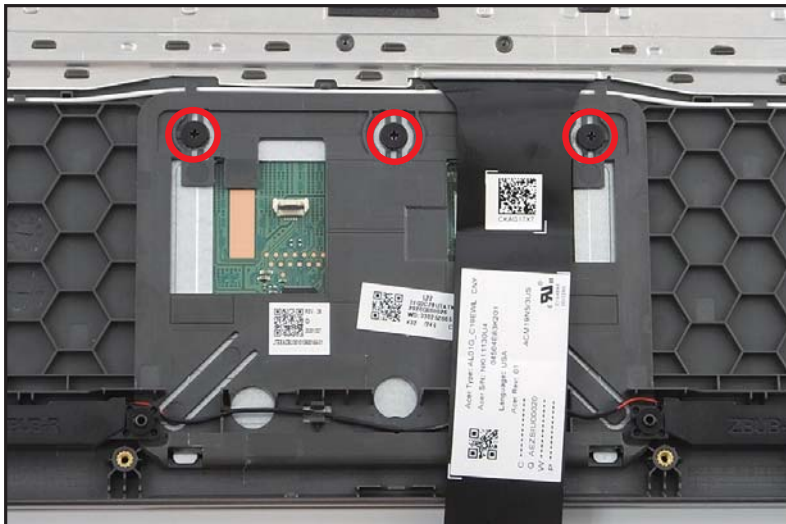


Figure 1-12. Touchpad Module Removal

5. Using the screwdriver, push the guide pins (D) firmly to release them from the top assembly (Figure 1-13).
6. With one hand is placed underneath the touchpad module, push the touchpad module slightly to disengage it from the bottom latches (E), and then remove the touchpad module (F) from the top assembly (Figure 1-13).

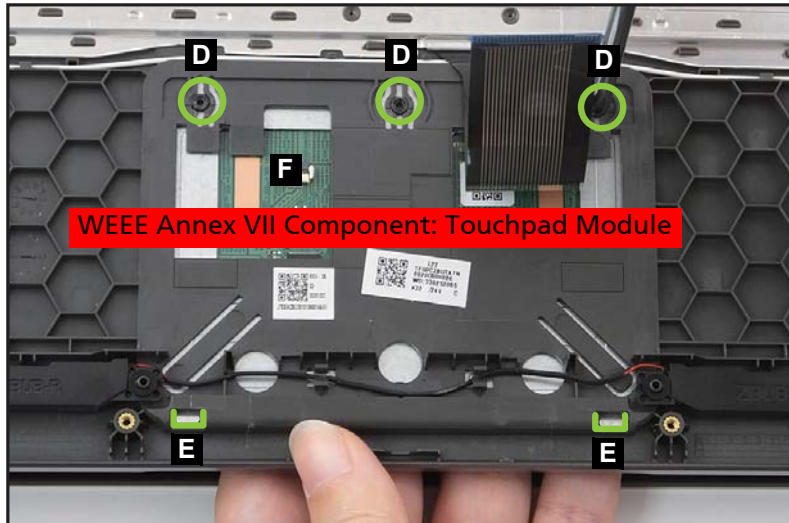


Figure 1-13. Touchpad Module Removal

SSD Module Removal

Prerequisite:

Battery Pack Removal

1. Disconnect the 45-pin USB board FFC from the USB board connector (A) and the mainboard connector (B). Then remove the 45-pin USB board FFC (Figure 1-14).

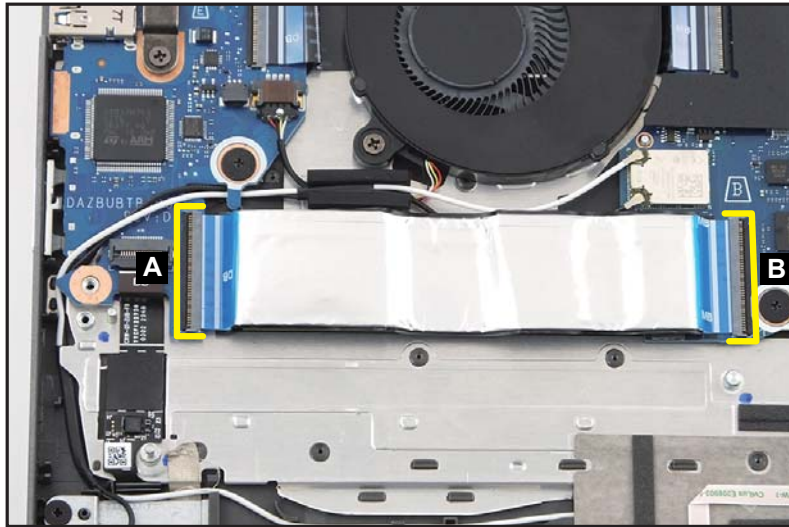


Figure 1-14. SSD Module Removal

2. Remove one (1) screw securing the SSD module in place (Figure 1-15).



Figure 1-15. SSD Module Removal

LCD Module Removal

Prerequisite:

Battery Pack Removal

1. Disconnect the G-sensor cable from the USB board connector (A) (Figure 1-17).
2. Unroute the G-sensor cable from the cable guide (B) (Figure 1-17).

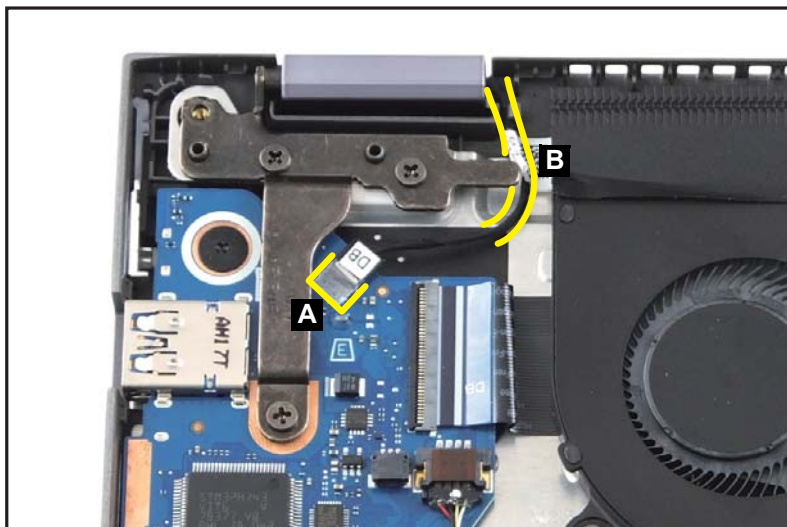


Figure 1-17. LCD Module Removal

3. Disconnect the eDP cable from the mainboard connector (C) (Figure 1-18).

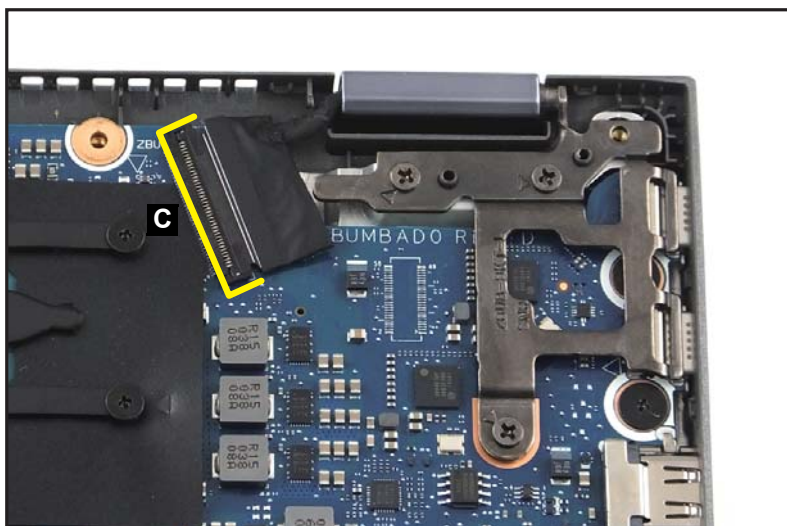


Figure 1-18. LCD Module Removal

4. Remove six (6) screws securing the LCD hinges in place (Figure 1-19).

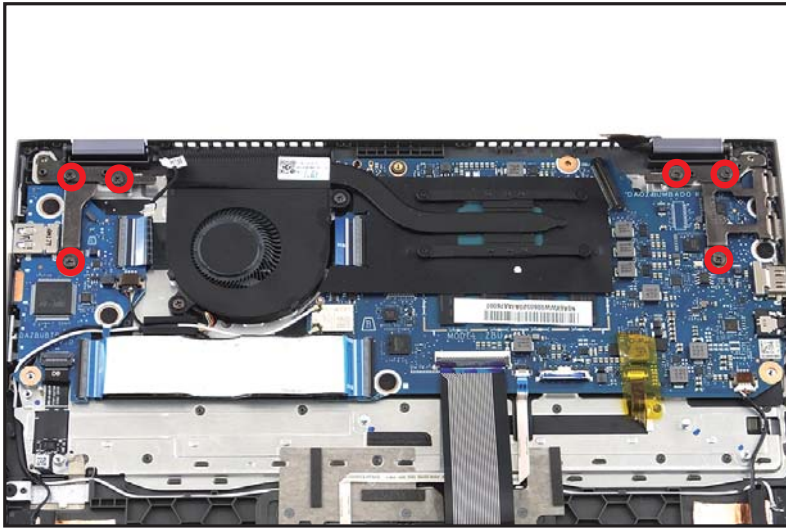


Figure 1-19. LCD Module Removal

5. Lift the top assembly until it is fully open (Figure 1-20).



Figure 1-20. LCD Module Removal

6. Close the top assembly and lift both LCD hinges until they are fully extended (Figure 1-21).

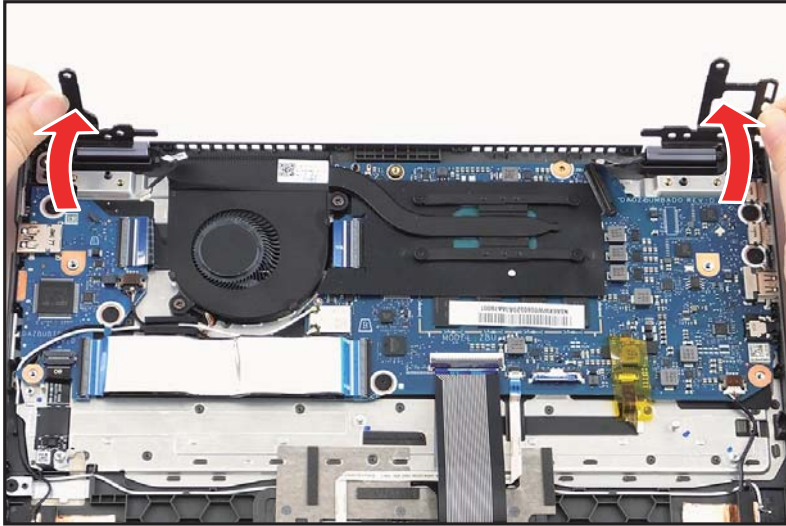


Figure 1-21. LCD Module Removal

7. Open the top assembly again. Then remove the LCD module away from the top assembly (Figure 1-22).

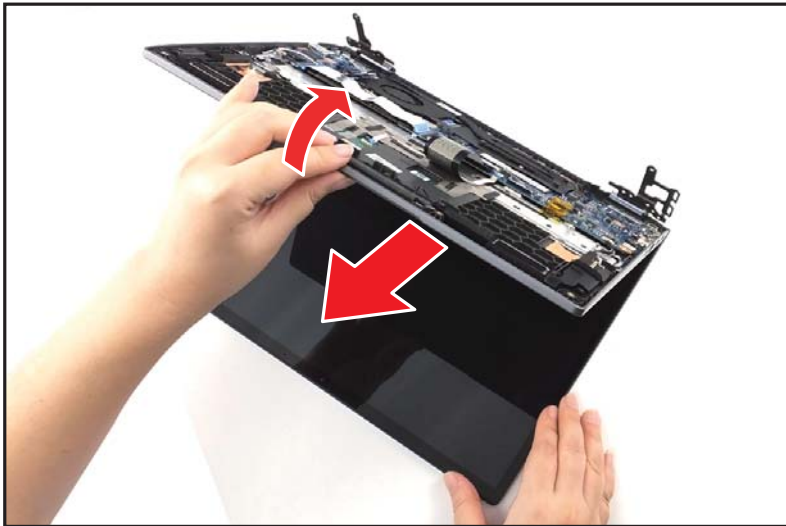


Figure 1-22. LCD Module Removal

USB Board Removal

Prerequisite:

Ensure that the **Fan** has been disassembled prior removing the USB board.

1. Remove three (3) screws (A) securing the left side of LCD hinge in place (Figure 1-23).

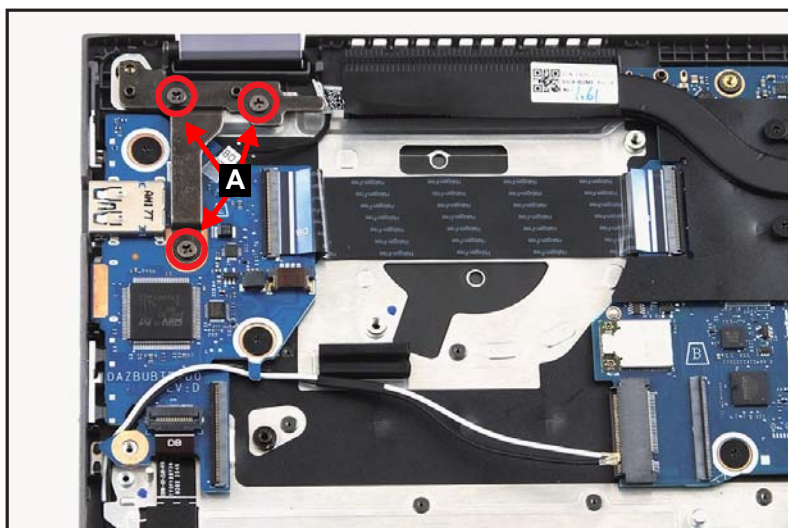


Figure 1-23. USB Board Removal

2. Lift the top assembly until it is fully open (Figure 1-24).

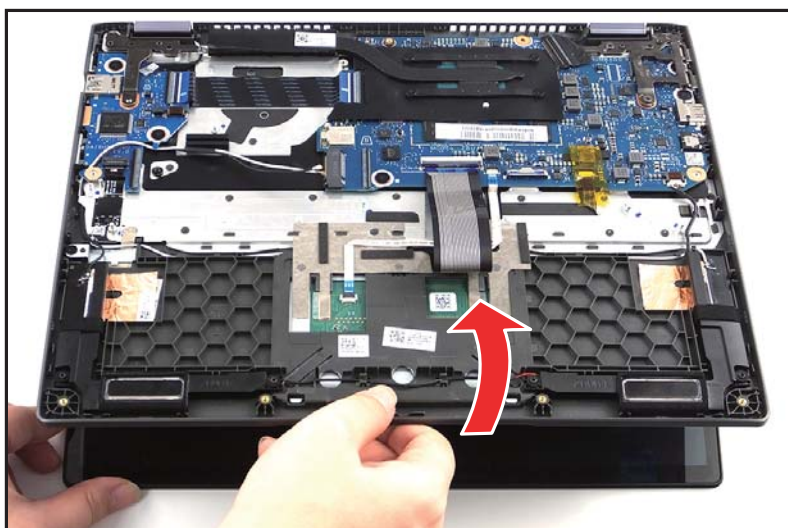


Figure 1-24. USB Board Removal

3. Close the top assembly and lift the left side of LCD hinge until it is fully extended ([Figure 1-25](#)).

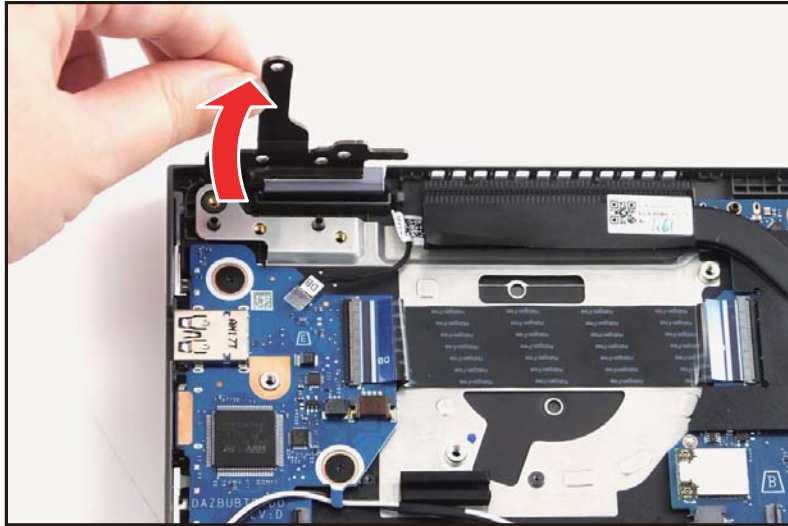


Figure 1-25. USB Board Removal

4. Disconnect the 40-pin USB board FFC (B) from the mainboard and USB board connectors ([Figure 1-26](#)).
5. Disconnect the G-sensor cable from the USB board connector (C) ([Figure 1-26](#)).
6. Disconnect the fingerprint cable from the USB board connector (D). Then unroute the WLAN antennas cables from the cable guides ([Figure 1-26](#)).
7. Remove two (2) screws (E) securing the USB board in place ([Figure 1-26](#)).

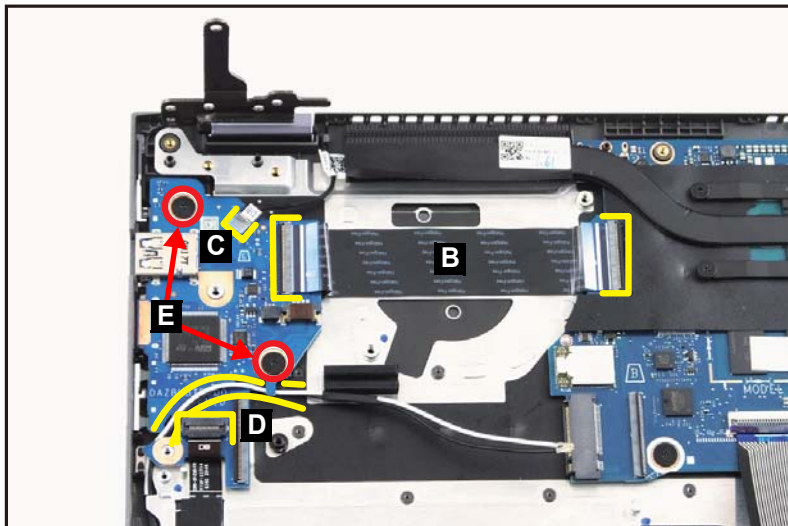


Figure 1-26. USB Board Removal

8. Release the USB board (F) from the USB port slot and guide pin (G) on the top assembly. Then remove the USB board (Figure 1-27).



Figure 1-27. USB Board Removal

Mainboard Removal

Prerequisite:

Ensure that the **Heatsink** and **Fan** have been disassembled prior removing the mainboard.

1. Remove three (3) screws (A) securing the right side of LCD hinge in place (Figure 1-28).

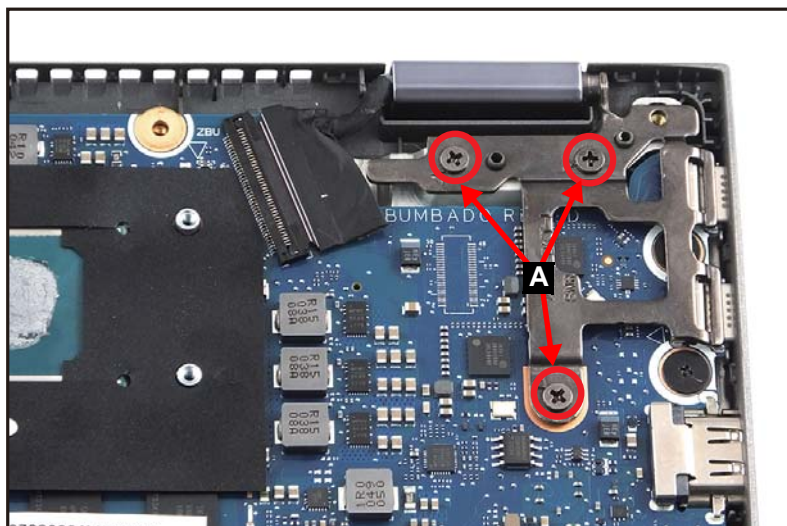


Figure 1-28. Mainboard Removal

2. Lift the top assembly until it is fully open (Figure 1-29).

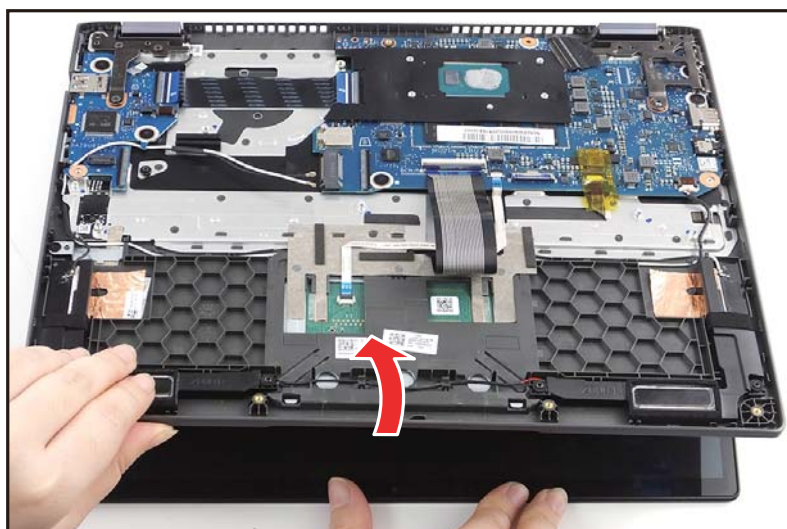


Figure 1-29. Mainboard Removal

3. Close the top assembly and lift the right side of LCD hinge until it is fully extended (Figure 1-30).

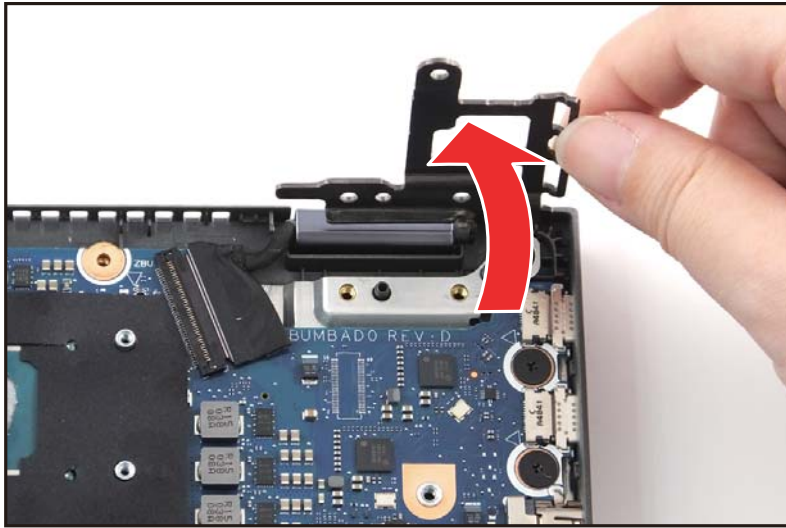


Figure 1-30. Mainboard Removal

4. Gently peel off the mylar (B) from the mainboard. While detaching the mylar, be careful to release it from the guide pins (C) (Figure 1-31).
5. Detach the adhesive tape (D) securing the keyboard backlight FPC (Figure 1-31).

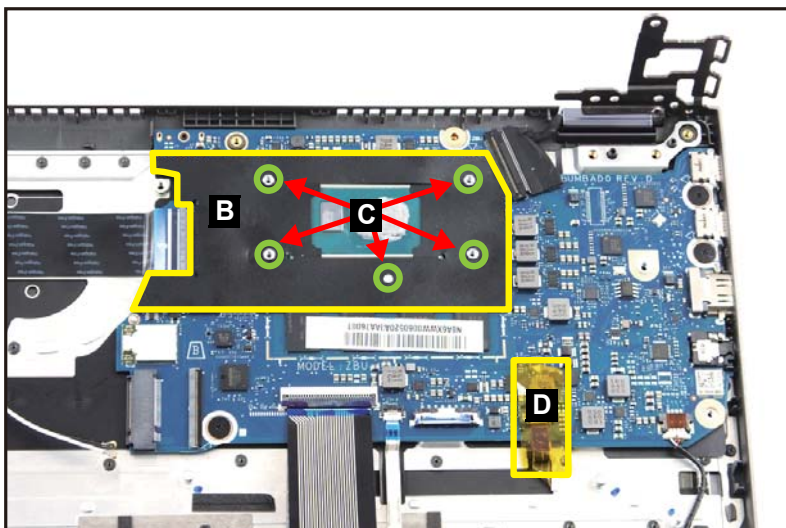


Figure 1-31. Mainboard Removal

6. Disconnect the 40-pin USB board FFC to the mainboard connector (E) (Figure 1-32).
7. Disconnect the keyboard FPC from the mainboard connector (F) (Figure 1-32).
8. Disconnect the touchpad FFC from the mainboard connector (G) (Figure 1-32).
9. Disconnect the keyboard backlight FPC from the mainboard connector (H) (Figure 1-32).

10. Disconnect the speaker cable from the mainboard connector (I) (Figure 1-32).
11. Disconnect the eDP cable from the mainboard connector (J) (Figure 1-32).

⚠ CAUTION:

Make sure all cables, FFCs, and FPC are disconnected from the connectors on the mainboard to avoid damage during removal.

12. Remove three (3) screws (K) securing the mainboard in place (Figure 1-32).

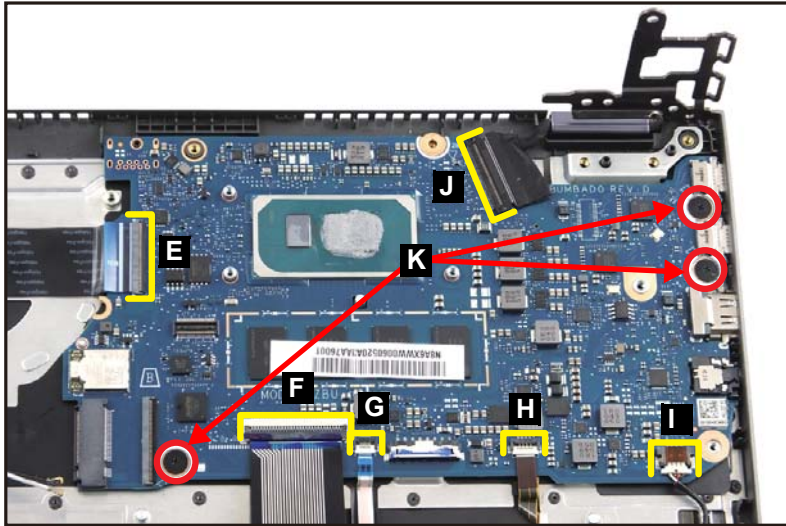


Figure 1-32. Mainboard Removal

13. Release the mainboard (L) from the I/O ports slots and guide pins (M) on the top assembly. Then remove the mainboard (Figure 1-33).

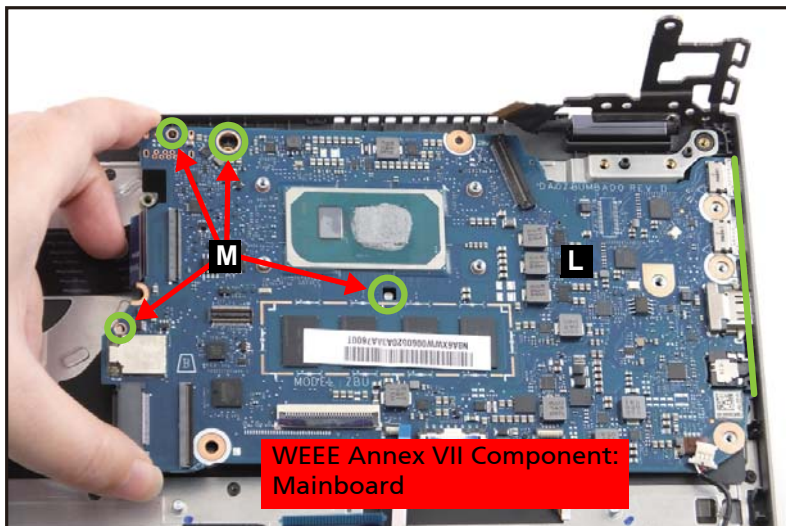


Figure 1-33. Mainboard Removal

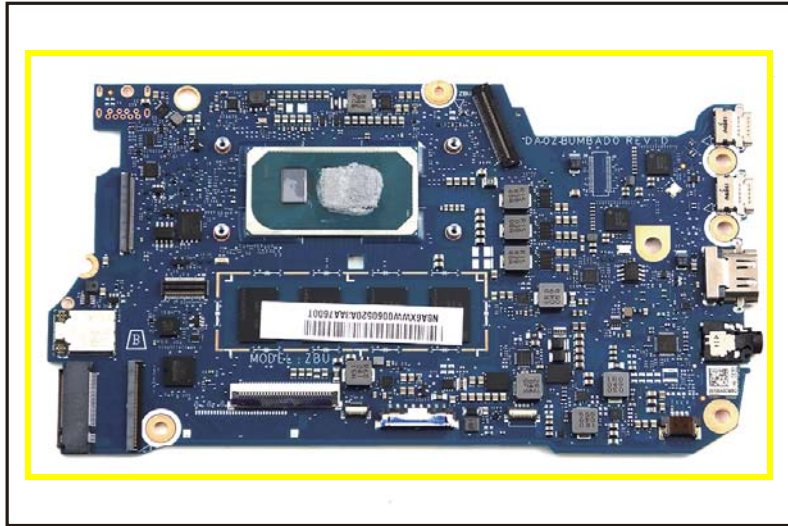


Figure 1-34. Mainboard

+ **IMPORTANT:**

Circuit boards >10 cm² have been highlighted with a yellow rectangle as shown in [Figure 1-34](#). Remove the circuit board and follow local regulations for disposal.

LCD Panel Removal

Prerequisite:

[LCD Module Removal](#)

1. Pry the LCD panel from the left side to release latches ([Figure 1-35](#)).

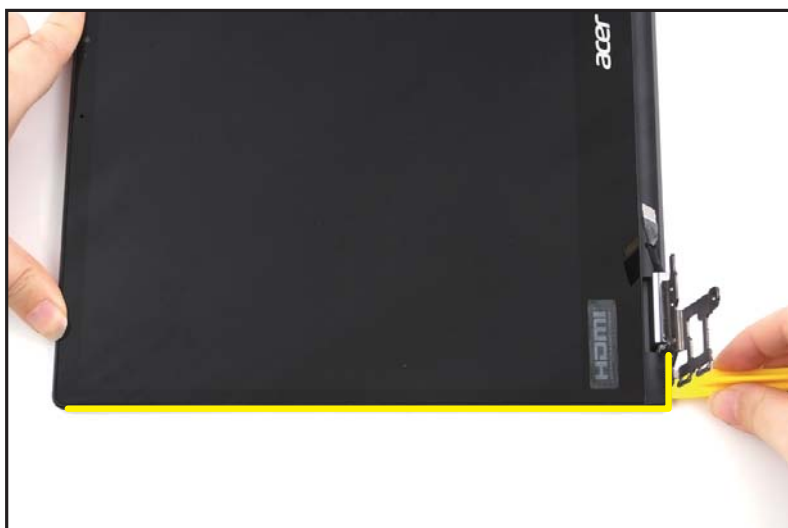


Figure 1-35. LCD Panel Removal

2. Continue along the upper side of the LCD panel ([Figure 1-36](#)).

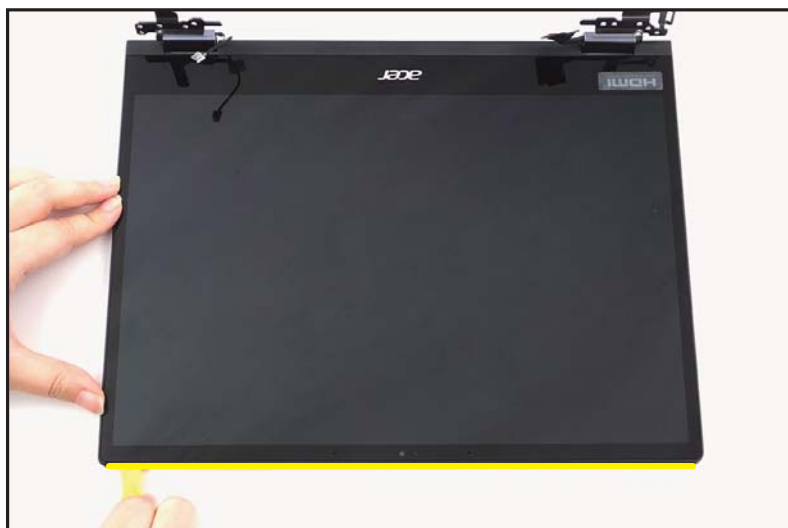


Figure 1-36. LCD Panel Removal

3. Continue along the right side of the LCD panel (Figure 1-37).

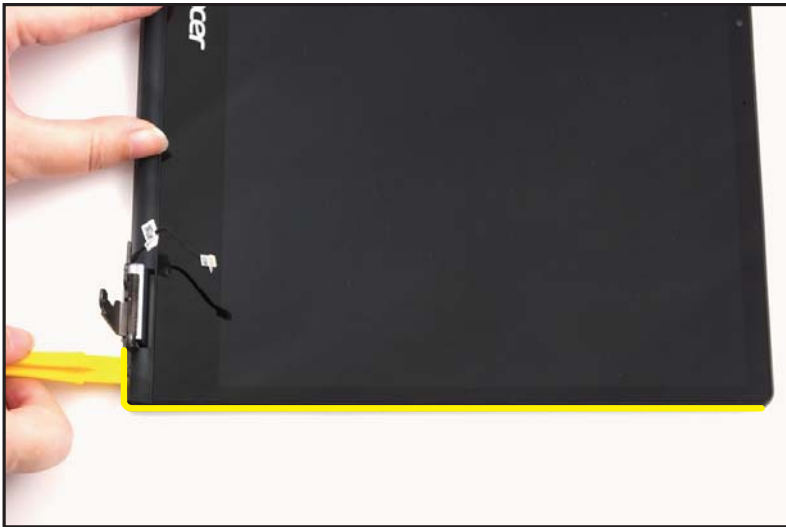


Figure 1-37. LCD Panel Removal

4. Carefully lift the LCD panel (A) (Figure 1-38).

⚠ CAUTION:

Do not remove the LCD panel yet because the eDP cable has not been released from the LCD hinges.



Figure 1-38. LCD Panel Removal

5. Release the eDP cable from the rubber (B) inside the left LCD hinge cap ([Figure 1-39](#)).



Figure 1-39. LCD Panel Removal

6. Remove the LCD panel.

Top Assembly Removal (Keyboard Removal)

Prerequisite:

Ensure that the **LCD Module**, **WLAN Antenna**, **Fingerprint Module**, **USB Board**, and **Mainboard** have been disassembled prior removing the top assembly.

⇒ NOTE:

The keyboard is included as part of the top assembly and cannot be disassembled. In the event that the keyboard can no longer be used, replace the entire top assembly.



Figure 1-40. Top Assembly (Keyboard)

Troubleshooting

This chapter shows you how to deal with common system problems. Read it before calling a technician if a problem occurs. Solutions to more serious problems require opening up the computer. Do not attempt to open the computer yourself; contact your dealer or authorized service center for assistance.

Troubleshooting tips

This computer incorporates an advanced design that delivers on-screen error message reports to help you solve problems.

If the system reports an error message or an error symptom occurs, see “Error messages” below. If the problem cannot be resolved, contact your dealer.

Error messages

If you receive an error message, note the message and take the corrective action. The following table lists the error messages in the alphabetical order together with the recommended course of action.

Table 1-1. Error Messages

Error Messages	Corrective Action
CMOS battery bad	Contact your dealer or an authorized service center.
CMOS checksum error	Contact your dealer or an authorized service center.
Disk boot failure	Insert a system (bootable) disk, then press Enter to reboot.
Equipment configuration error	Press F2 (during POST) to enter BIOS utility, then press Exit in the BIOS utility to reboot.
Hard disk 0 error	Contact your dealer or an authorized service center.
Hard disk 0 extended type error	Contact your dealer or an authorized service center.
I/O parity error	Contact your dealer or an authorized service center.
Keyboard error or no keyboard connected	Contact your dealer or an authorized service center.
Keyboard interface error	Contact your dealer or an authorized service center.
Memory size mismatch	Press F2 (during POST) to enter BIOS utility, then press Exit in the BIOS utility to reboot.

If you still encounter problems after going through the corrective measures, please contact your dealer or an authorized service center for assistance.

FRU (Field Replaceable Unit) List

Please contact your local service center to find out how to obtain the part or replace your device.

Exploded Diagrams

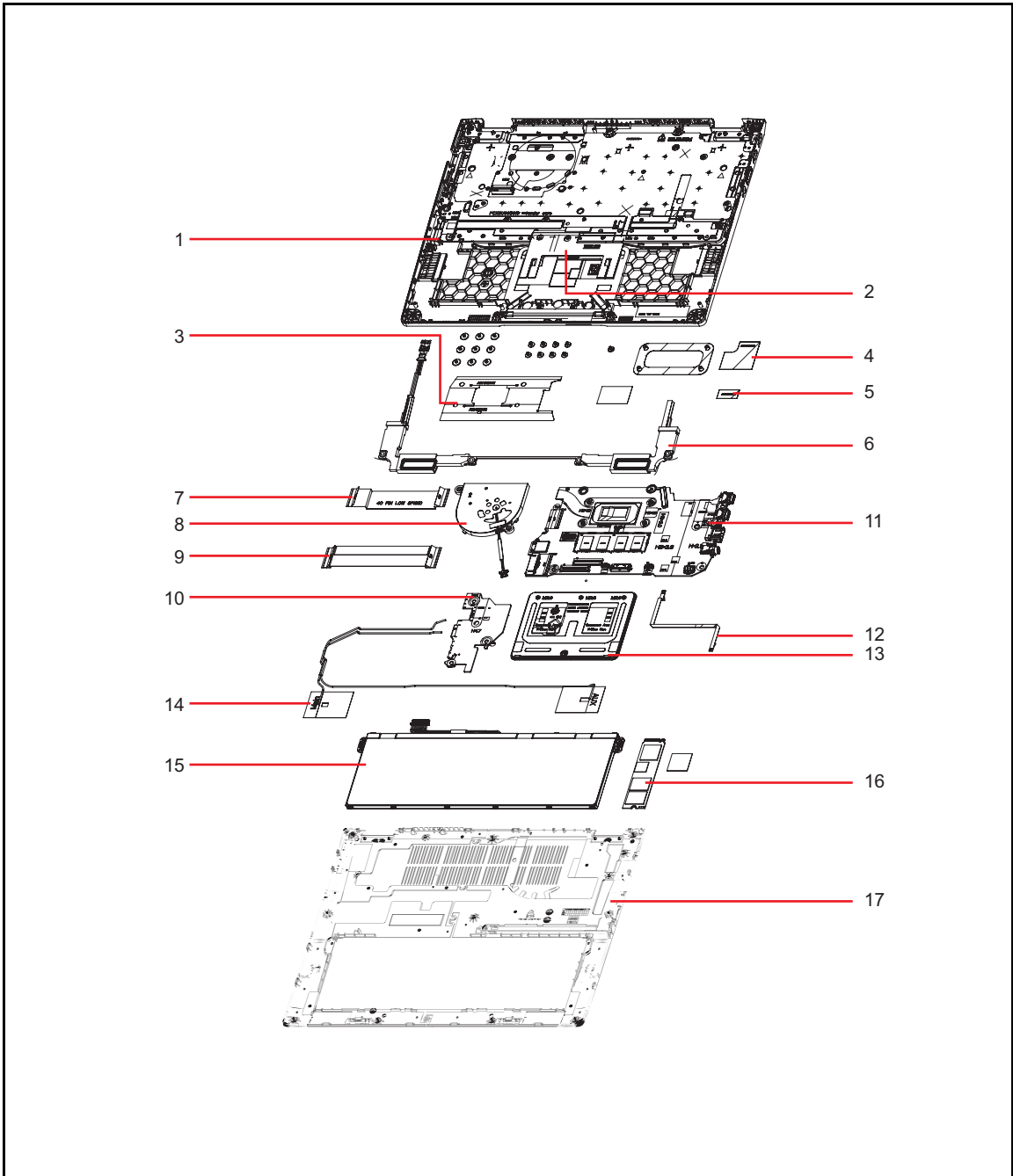


Figure 1-41. System Exploded Diagram

Table 1-2. System Exploded Diagram

No.	Description
1	Top Assembly
2	Conductive Tape
3	Mylar (for mainboard)
4	Insulator Mylar
5	Acetate Tape
6	Speakers
7	USB Board FFC (low speed)
8	Fan
9	USB Board FFC (high speed)
10	USB Board
11	Mainboard
12	Touchpad FFC
13	Touchpad Module
14	WLAN Antenna (MAIN+AUX)
15	Battery Pack
16	SSD Module
17	Base Cover

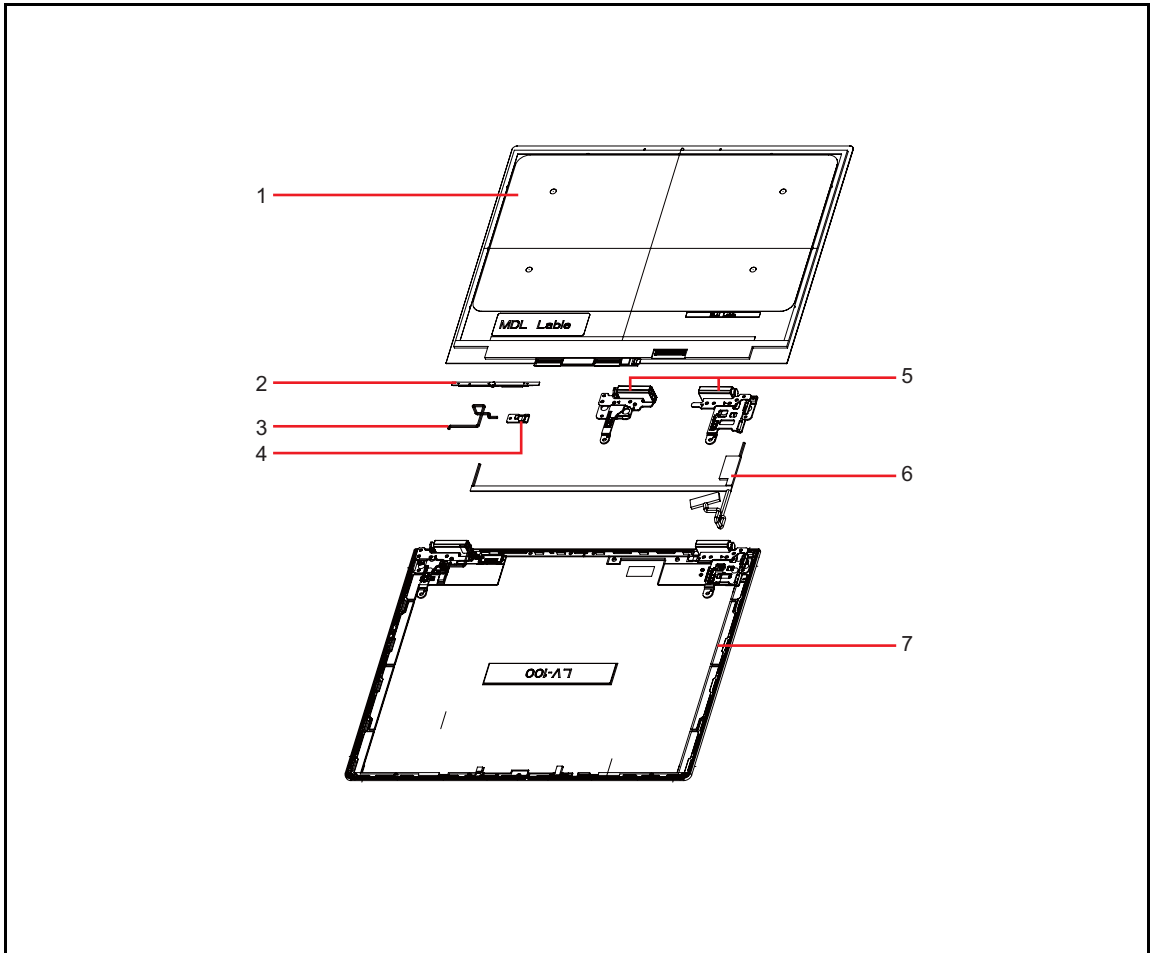


Figure 1-42. LCD Assembly Exploded Diagram

Table 1-3. LCD Assembly Exploded Diagram

No.	Description
1	LCD Module
2	Camera Module
3	G-sensor Cable
4	G-sensor Board
5	LCD Hinge L
	LCD Hinge R
6	eDP Cable
7	LCD Cover

Software Update



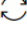


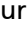
Updating your software

Please visit <http://go.acer.com/?id=17883>

Personal Data Removal

Removing your personal data

There are three options to choose from:

- Option 1: Select **Start**  > **Settings**  > **Update & Security**  > **Recovery**. Under **Reset this PC**, select **Get started**. Open **Recovery settings**.
- Option 2: Restart your PC to get to the sign-in screen, then press and hold down the **Shift key** while you select the **Power**  icon > **Restart** in the lower-right corner of the screen. After your computer restarts, select **Troubleshoot** > **Reset this PC**.
- Option 3: Select **Start** , then press and hold down the **Shift key** while you select the **Power**  icon > **Restart** to restart your computer into Recovery Mode. After your computer restarts, select **Troubleshoot** > **Reset this PC**.